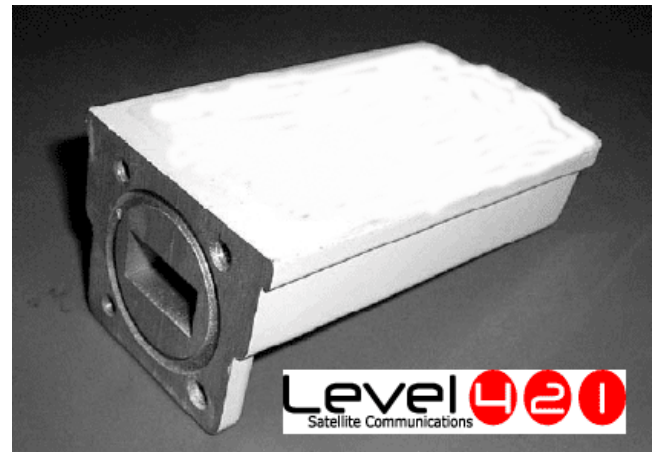


Ku-Band DRO LNB



Frequency

Model Number	Input GHz	Output (MHz)	L.O (GHz)
Low Band PLL LNB	10.95 – 11.7	950 - 1700	10.0
High Band PLL LNB	12.25 – 12.75	950 - 1450	11.3

Parameter

Noise figure (@ +25°C)	0.6 to 0.9 dB max
Input VSWR	2.5 : 1 typ
Image rejection	40 dB min.
Conversion gain	55 dB typ.
Output VSWR	2 : 1 typ.
Gain flatness	6 dBp-p max.
Gain ripple (@ per channel)	+/-0.75dB max.
1dB gain compression point	0 dBm min
Output impedance	75 ohms
Leakage (@ input port)	-60 dBm max.
Phase noise	-80 dBc/Hz (@10KHz)
	-95 dBc/Hz (@100KHz)

	-110 dBc/Hz (@1MHz)
Power supply	+12 to +24V DC
Required current	150 mA max.
Operating temperature	-30°C to +60°C
Storage temperature	-40 °C to +80°C
Relative humidity	0% to 95% RH
Input waveguide flange	WR-75
IF output connector	F-type female
Weight	190 g

Outline Drawing

