

1.2m VSAT Installation Manual



Description

This antenna contains a 1.3m*1.1m elliptical reflector, connecting support, AZ/EL pointing assembly, RF support assembly and RF electronics package. This system is designed to adjust the fine azimuth and elevation at a range of 360 degrees and 5 to 90 degrees respectively.

Note:

The system shall be installed according to the following detailed instruction, as well as should be inspected to validate the installation and condition of equipment periodically. As for the results of improper or unsafe installation practices, manufacturer acclaims no responsibility. Also, please wear the cotton glove on the purpose to avoid from scraping while installing.

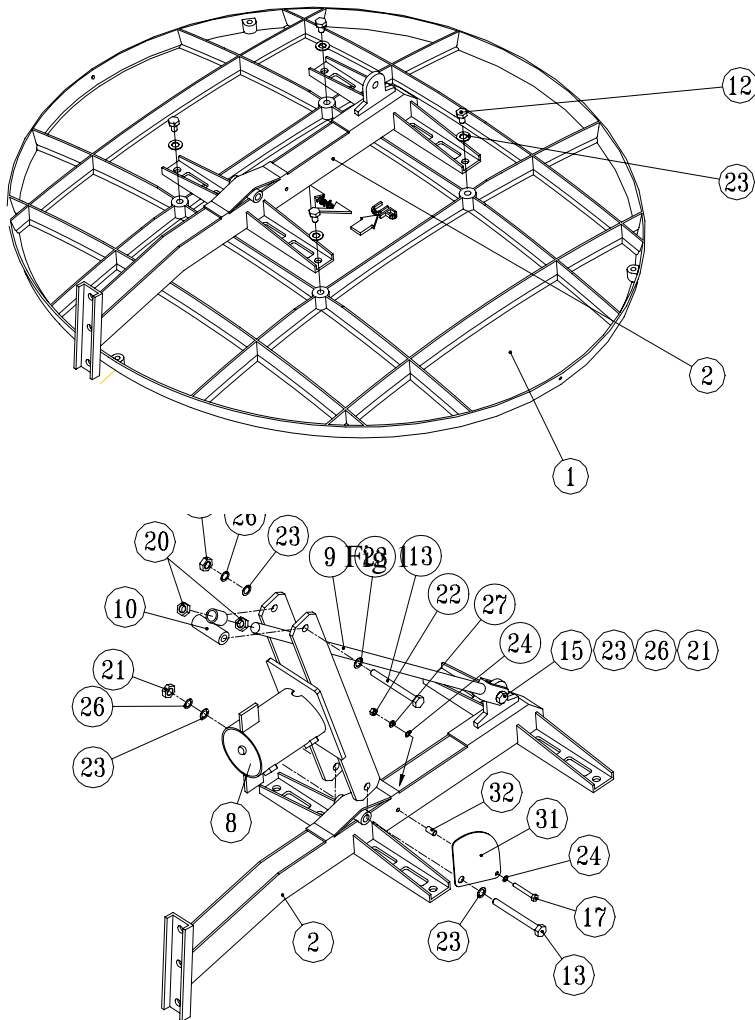



Fig 2

Place the elliptical **reflector** face down on a flat and make sure to place the **connecting support** in the back of the reflector with “” and thread 4 **1/2-W12*3/4”L hex head screws** and on the back of the reflector.

Connect one 700mm length **link rod** with a **1/2-13UNC*2”L hex head screw**, a **nut**, **2 flat washers** and a **spring washer** to the **connecting support**. On the other side of the **link rod**, one **rotating axle** is assembled between two **3/4-10UNC hex nuts** in order to adjust the elevation angle in coarse. The **base** is linked to **rotating axle** with one set of a **1/2-13UNC*4.5”L hex head screw**, **1 nut**, **2 flat washers** and **1 spring washer**. Also, the **base** is linked to **connecting support** and **elevation plate** with one **spacer**, and one set of a **1/4-20UNC*2”L hex head screw**, **1 nut**, **2 flat washers** and **1 spring washer** as well as one set of a **1/2-13UNC*4.5”L hex head screw**, **1 nut**, **2 flat washers** and **1 spring washer**.

1.2m VSAT Installation Manual

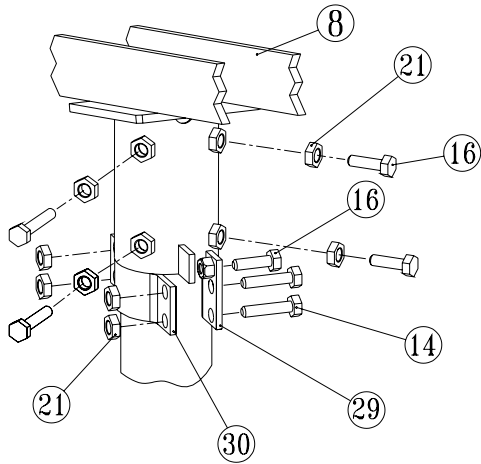


Fig 3

Step 3

Place straight the antenna assembly into the pipe support belonged to the optional non-penetrating/ penetrating system. Then, rotate the base and tighten slightly 4 sets of a **1/2-13UNC*1.5”L hex head screw** and 1 **nut**. Mate the top edge of **clamp1** & **clamp2** with the bottom of **base**. Tighten **clamp1** & **clamp2** by using four **1/2-13UNC*3”L hex head screws** and four **nuts**. Thread two **1/2-13UNC*1.5”L hex head screws** at **clamp1** until the screws touch the adjust block of the **base**. Don't tighten these two screws until step 8.

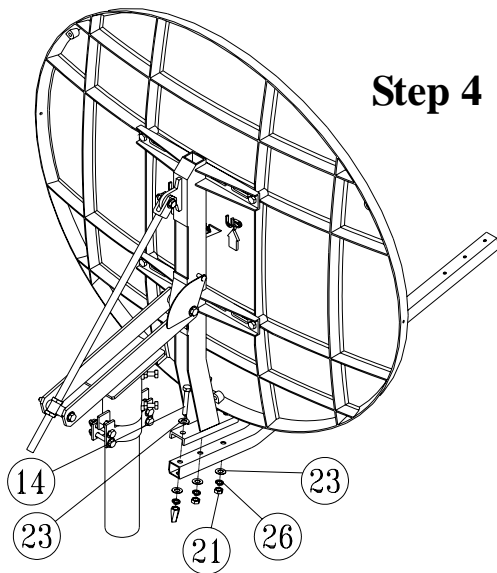


Fig 4

Step 4

Tighten the **female mounting pipe** and the **connecting support** by using 3 sets of a **1/2-13UNC*3”L hex head screw**, 1 **nut**, 2 **flat washers** and 1 **spring washer**.

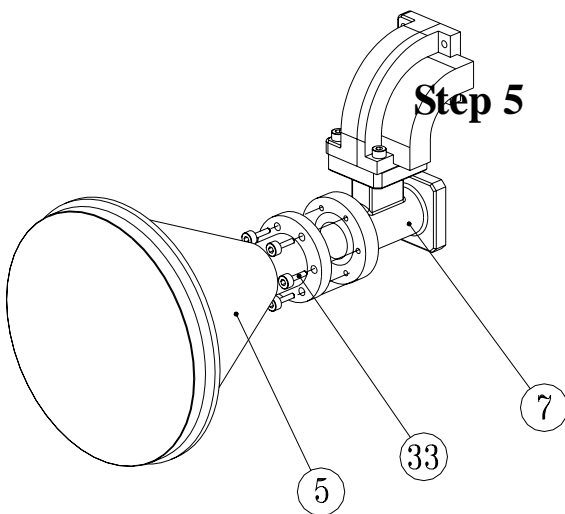


Fig 5

Step 5

Tighten **horn assembly** and **ku-OMT network** with six **M4*12 mm L hex socket screws**.

1.2m VSAT Installation Manual

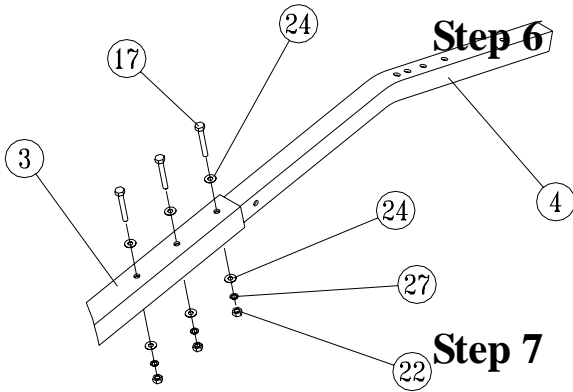


Fig6

Thread 3 sets of a **1/4-20UNC*2”L hex head screw**, **1 nut**, **2 flat washers** and **1 spring washer** onto the **male and female mounting pipes**. Don't thread the screw sets tightly until step 9.

Thread 2 **M8*40 mm L hex head screws** and 2 **flat washers** onto **male mounting pipe to support stand**. Insert 2 **M5*12mm L hex socket screws** into the holes of the **clamp** to thread the **support stand** and fix **horn assembly and ku-OMT network**

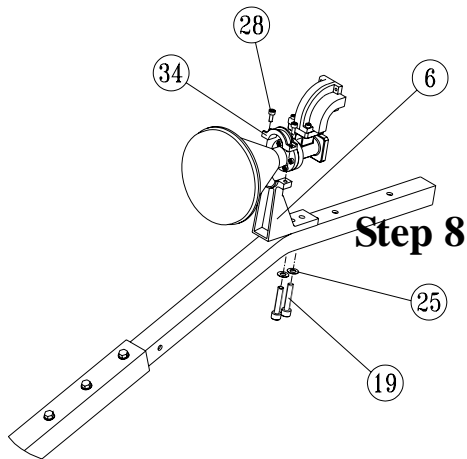


Fig 7

Step 8 (Optional)

Make sure 2 **connecting link rods** being marked in symbols “R” and “L” respectively on the exact sides and locate two rods to the mounting pipe assembly and the reflector at which the symbols are located. Then, attach two rods to the reflector using 2 sets of a **1/4-20UNC*1”L hex head screw**, **1 nut**, **2 flat washers** and **1 spring washer** and to the **male mounting pipe** using a **1/4-20UNC*2”L hex head screw**, **1 nut**, **2 flat washers** and **1 spring washer**. Finally, tighten the screw sets.

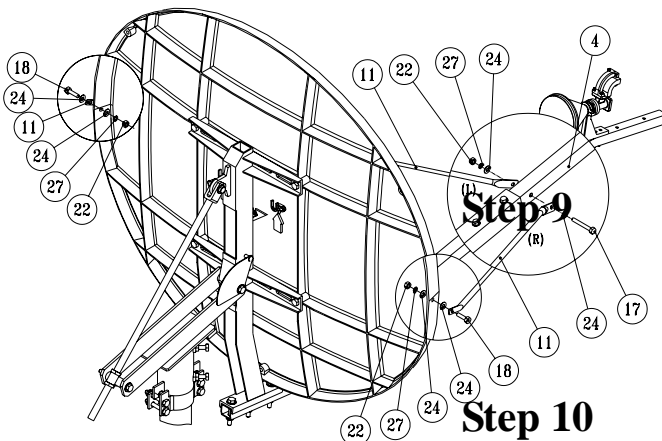


Fig 8

Repeat step 6 to tighten the screw sets at **male/female mounting pipes**.

Release the four **1/2-13UNC*3”L screws** on **clamp1 & clamp2**. Then, adjust the azimuth angle by screwing up the two **1/2-13UNC*1.5”L screws** on the adjust block of the **base**. Finally, tighten **clamp1 & clamp2** by using two **1/2-13UNC*3”L hex head screws** and two **nuts**. (Refer to Step 3)

1.2m VSAT Installation Manual

Antenna Parts List			
Item	Description	Q'ty	
			*
1	reflector	1	1
2	connecting support	1	1
3	female mounting pipe	1	1
4	male mounting pipe	1	1
5	horn assembly	1	1
6	support stand	1	1
7	ku-OMT network	1	1
8	base	1	1
9	link rod	1	1
10	rotating axle	1	1
11	connecting link rod	2	0
12	1/2"-W12*3/4"L hex head screw	4	4
13	1/2"-13UNC*4.5"L hex head screw	2	2
14	1/2"-13UNC*3"L hex head screw	7	7
15	1/2"-13UNC*2"L hex head screw	1	1
16	1/2"-13UNC*1.5"L hex head screw	6	6
17	1/4"-20UNC*2"L hex head screw	5	4
18	1/4"-20UNC*1"L hex head screw	2	0
19	M8*40mmL hex head screw	2	2
20	3/4"-10UNC nut	2	2
21	1/2"-13UNC nut	14	14
22	1/4"-20UNC nut	7	4
23	1/2" flat washer	24	24
24	1/4" flat washer	14	8
25	M8 flat washer	2	2
26	1/2" spring washer	10	10
27	1/4" spring washer	7	4
28	M5*12mmL hex socket screw	2	2
29	clamp1	1	1
30	clamp2	1	1
31	elevation plate	1	1
32	spacer	1	1
33	M4*12mmL hex socket screw	6	6
34	Clamp	1	1
35	M4 allen driver	1	1
36	M5 allen driver	1	1

*: The column shows the quantity used in the optional product.